

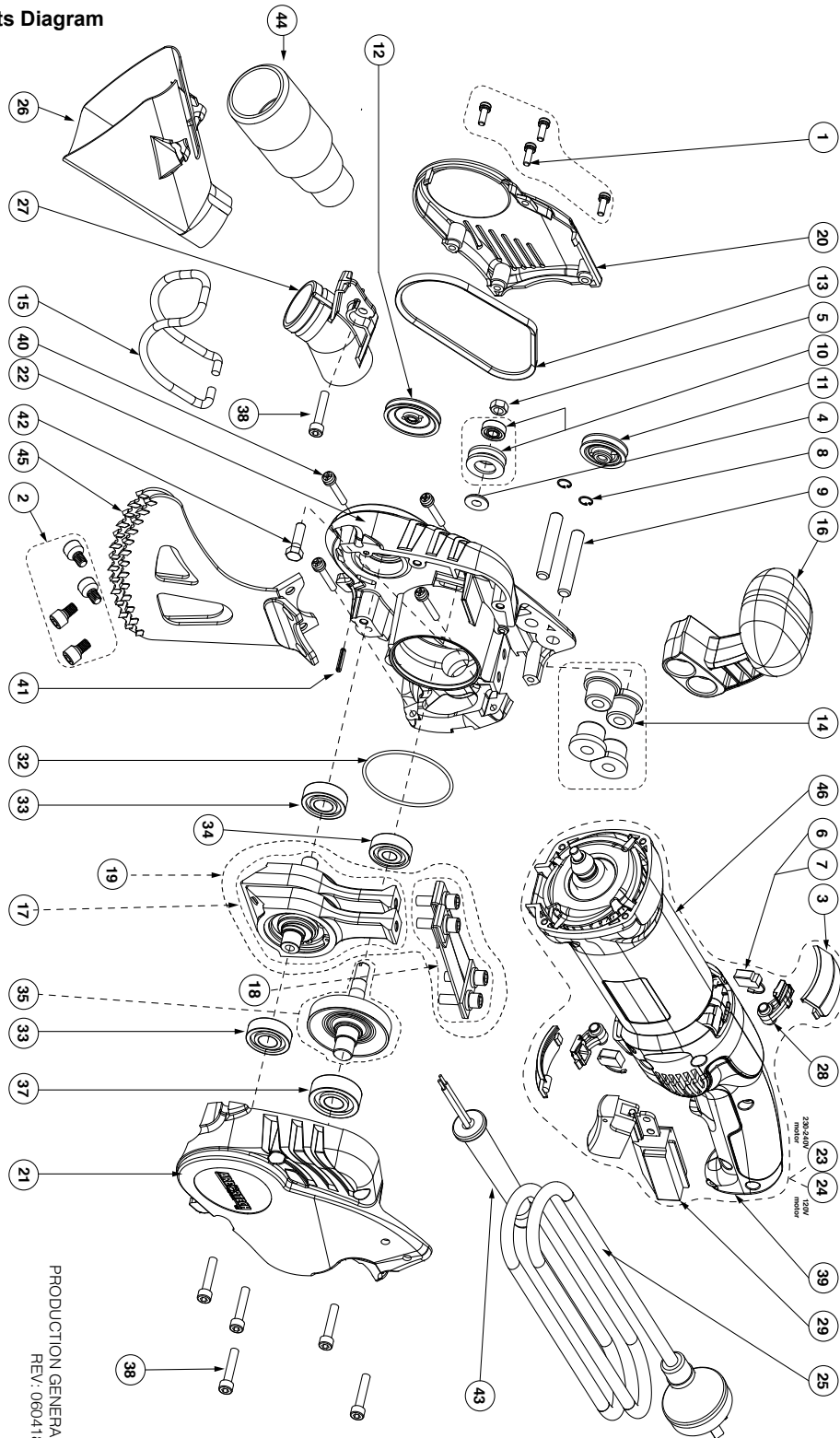
Arbortech AS170 Parts List - Australia / Europe (240V and 120V)

Effective: 6th April, 2018

PRODUCT KEY NUMBER	PRODUCT CODE	DESCRIPTION	COMMENT	QUANTITY IN PACK
1	ALL.FG.SCREW015	SCREW, BELT COVER, M4 X 12	Fits both AS160 and AS170	4
2	ALL.FG.BOLT17012	BOLT, BLADE BEVELLED, M6 X 10	Fits both AS160 and AS170	4
3	ALL.FG.BRUSH1706	BRUSH, COVER, SET	AS170 only	2
4	ALL.FG.WASH024	WASHER, STEP, M6	Fits both AS160 and AS170	1
5	ALL.FG.NUT006	NUT, NYLOC, M6	Fits both AS160 and AS170	1
6	ALL.FG.BRUSH1703	BRUSH, CARBON, SET, 240V	AS170 only	2
7	ALL.FG.BRUSH1704	BRUSH, CARBON, SET, 120V	AS170 only	2
8	ALL.FG.CLIP001	CLIP, INTERNAL, SET, M8	Fits both AS160 and AS170	2
9	ALL.FG.PIN002	PIN, HANDLE, SET	Fits both AS160 and AS170	2
10	ALL.FG.TENSION001	TENSION PULLEY WITH BEARING	Fits both AS160 and AS170	1
11	ALL.FG.PULLEY005	PULLEY, POWER	Fits both AS160 and AS170	1
12	ALL.FG.PULLEY004	PULLEY, DRIVEN	Fits both AS160 and AS170	1
13	ALL.FG.BELT02	BELT	Fits both AS160 and AS170	1
14	ALL.FG.BUSH001	BUSH, RUBBER, SET	Fits both AS160 and AS170	4
15	ALL.FG.GUARD002	GUARD, WIRE	Fits both AS160 and AS170	1
16	ALL.FG.HANDLE001	HANDLE, TOP	Fits both AS160 and AS170	1
17	ALL.FG.CONROD003	CONRODS AND CAM, ASSEMBLY	Fits both AS160 and AS170	1
18	ALL.FG.SPRINGASS002	SPRING ASSEMBLY KIT	Fits both AS160 and AS170	1
19	ALL.FG.CONROD001	CONRODS, CAM AND SPRINGS, ASSEMBLY	Fits both AS160 and AS170	1
20	ALL.FG.COVER001	COVER, BELT	Fits both AS160 and AS170	1
21	ALL.FG.HOUSE170LH	HOUSING, LEFT HAND	AS170 only	1
22	ALL.FG.HOUSE170RH	HOUSING, RIGHT HAND	AS170 only	1
23	ALL.FG.MOTOR1703 -	MOTOR, 1250W, 240V - REGIONAL	AS170 only	1
24	ALL.FG.MOTOR1703 -	MOTOR, 1250W, 120V - REGIONAL	AS170 only	1
25	ALL.FG.CORD170 -	CORD, 240V / 120V - REGIONAL	AS170 only	1
26	ALL.FG.BOOT001	BOOT, DUST EXTRACTOR	Fits both AS160 and AS170	1
27	ALL.FG.BRACKET03	BRACKET, DUST EXTRACTION FITTING	Fits both AS160 and AS170	1
28	ALL.FG.BRUSH1705	BRUSH, HOLDER, SET	AS170 only	2
29	ALL.FG.SWITCH1702	SWITCH, 240V / 120V	AS170 only	1
32	ALL.FG.SEAL17001	SEAL, O-RING, M52 X 2	Fits both AS160 and AS170	1
33	ALL.FG.BEARING002	BEARING, CAM SHAFT, 6001	Fits both AS160 and AS170	1
34	ALL.FG.BEARING004	BEARING, RH CROWN, 629	Fits both AS160 and AS170	1
35	ALL.FG.CROWN170	CROWN SHAFT, ASSEMBLY	AS170 only	1
37	ALL.FG.BEARING006	BEARING, LH CROWN, 6201	Fits both AS160 and AS170	1
38	ALL.FG.SCREW011	SCREW, HOUSING, SET, M5 X 25	Fits both AS160 and AS170	5
39	ALL.FG.HANDLE17002	HANDLE, REAR - BOTH HALVES	AS170 only	1 LH & 1 RH
40	ALL.FG.SCREW016	SCREW, OUTER FIELD CASING, SET, PT 4 X 22	AS170 only	4
41	ALL.FG.PIN001	PIN, DOWELL, M3 X 16	Fits both AS160 and AS170	1
42	ALL.FG.BOLT004	BOLT, M6 X 20	Fits both AS160 and AS170	1
43	ALL.FG.CORDGUARD170	CORDGUARD	Can be modified to fit AS160 as well	1
44	ALL.FG.ADAPT001	ADAPTOR, VACUUM	Fits both AS160 and AS170	1
45	BLA.FG.1110	BLADE SET, GENERAL PURPOSE	Fits both AS160 and AS170	1
46	ALL.FG.FIELDCASE170	FIELD, PLASTIC CASING	AS170 only	1
-	ALL.FG.BAG170	BAG, AS170 TOOL	Fits both AS160 and AS170	1
-	ALL.FG.BEARING005	BEARING, CONROD, 6004	Fits both AS160 and AS170	1
-	ALL.FG.BEARING007	BEARING, FRONT MOTOR, 608-05	Fits both AS160 and AS170	1
-	ALL.FG.BEARING008	BEARING, REAR MOTOR, 607-05	Fits both AS160 and AS170	1
-	ALL.FG.KEY004	KEY, TORQUE, 18Nm	Fits both AS160 and AS170	1
-	BLA.FG.1200	BLADE SET, GENERAL PURPOSE, XL	AS170 only	1
-	BLA.FG.2110	BLADE SET, SWITCHBOX	Fits both AS160 and AS170	1
-	BLA.FG.4110	BLADE SET, PLUNGE	Fits both AS160 and AS170	1
-	BLA.FG.5110	BLADE SET, TUCKPOINTING	Fits both AS160 and AS170	1
-	BLA.FG.7000	BLADE SET, HEAD JOINT	Fits both AS160 and AS170	1
-	BLA.FG.8000	BLADE SET, HERITAGE	Fits both AS160 and AS170	1

Arbortech AS170 - Parts Diagram

Effective: 6th April, 2018



PRODUCTION GENERAL ASSEMBLY
REV: 060418